

**KIRKLAND WI
NEWSLETTER
DECEMBER
2023**



theWI
INSPIRING WOMEN

www.kirklandwi.co.uk

THE NEXT MEETING IS AT KIRKLAND MEMORIAL HALL DECEMBER 13TH 7.30 PM.

Hostesses for the December Christmas party are the Committee

The Christmas party is a 'Jacob's Join' – we ask everyone to bring a plate of savoury or sweet. PLEASE REMEMBER TO BRING YOUR OWN CUTLERY AND CROCKERY

We will be making Origami tree decorations and other festive decorations with the help of Liz D. All materials will be supplied

There will also be a stand up bingo game with a prize!!

Advance notice about the January meeting – 10/01/24

This will be our usual Hotpot Supper and games evening.

The cost of the Hotpot supper will be subsidised from WI funds so if you would like to come, please sign up at the December meeting or let me know by email.

The cost per person for Hotpot and delicious sweets will be £7

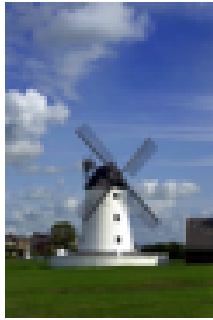
Vegetarian/gluten free/dairy free will be available

PLEASE BRING YOUR OWN CUTLERY AND CROCKERY AND CASH ON THE NIGHT

The LFWI FEDERATION FUN QUIZ on Monday 18th March 2024 – 7.30pm – 10.00pm at Broughton village hall will have a new format with a picture round included. Would you like to be in a team?

A sign-up sheet will be available at the next meeting.

LFWI COURSES AND NFWI NEWS SEE BELOW



LFWI ANNUAL COUNCIL MEETING

**Saturday 13th April 2024 at the Lowther Pavilion Theatre, Lytham
FY8 5QQ**

1pm – 4.30pm (Doors open at 11.30am)

Observer Tickets £10

Our ACM will once again be held in Lytham and follow a similar format to last year. Prior to the meeting start, there will be an opportunity to browse our first 'Makers Market' which will be held in the room adjacent to the auditorium.

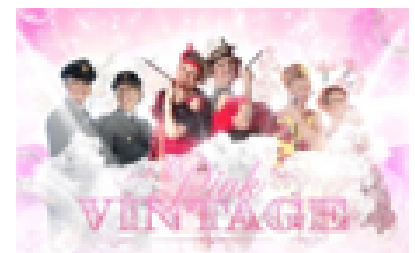


Our main speaker will be Jan Larkin, CEO of the Charity Nightsafe. Nightsafe operate in Blackburn, Darwen and surrounding areas, working with young people who are homeless or at risk of homelessness. They provide accommodation, advice and guidance, and they empower young people to play a positive part in their local community. They believe that every young person has a right to a roof over their head, to live in a safe environment and be treated with kindness, dignity and respect. Jan has been CEO for ten years and prior to this sat on their Board of Trustees for many years.



Alongside the business of the meeting, you will hear more from our talented members, and we will also be joined by Pink Vintage, a vocal duo who will take us back to some unforgettable musical eras.

All delegate tickets have now been allocated and will be issued with observer tickets. Observer tickets will be available to purchase from our website from Monday 8th January and there is a limit of 10 tickets per WI. You may wish to purchase in groups or individually, but we would be grateful if your WI could ensure numbers do not exceed the limit. Closing date for bookings will be 26th February.



www.lancashirewi.org.uk

Knit-a-long - Saturday 27th January, LFWI Offices, Croston House, Leyland from 10am onwards £5.00

A knit-a-long is where a group of knitters simultaneously work together on the same project - it's one big LFWI event.

Send along a representative (or two) from your WI to start the ball rolling. They will then cascade all the starter instructions to your WI and at the end of 10 weeks, we will all have a knitted scarf to show for it. DK Yarn and size 8 (4mm) needles are all you need to bring. If you have any questions at all, just email the office and these can be forwarded on to the organiser.

[BOOK HERE](#)

Write that Book with Rhona Whiteford - Saturday 17th February LFWI Offices, 10am - 3.30pm £20.00

Whether you want to write for your own interest and enjoyment, or with a view to getting published for a wider audience, in this workshop with Rhona Whiteford, you will learn from an established author who will set you on the right track. Closing date 31st January 2024.

[BOOK HERE](#)

Learn to Play Whist - Thursday 14th March, LFWI Offices, Leyland 10am - 12.30pm

£5.00

Join the Lifestyle team for a fun morning learning how to play Whist. We aim to give you the basic rules which are not at all complicated. Light refreshments will be provided. Closing date for bookings is Thursday 29th February.

[BOOK HERE](#)



Lancashire Federation Of
Women's Institutes
Public Affairs Team



International Day New Zealand

Samlesbury Memorial Hall

The hall is just off the M6 Sat Nav PR5 [OUY](#)

What three words - inches. evolves. rant

Monday 11th March 2024 – 10am – 3.30pm
£20

Join us for an inspirational International Day. Our country this year is New Zealand and there will be a variety of activities.

Quiz
Wine tasting
Story telling
Maori art
Picture gallery
Food tasting



Tea/coffee/biscuits on arrival and a picnic lunch will be provided.
All packaging will be eco-friendly and biodegradable.

We would love to see you there for this packed day of fun and information.
Bring scissors and felt tip pens.

Available to book on the LFWI website from Monday 27th November 2023. Closing date for bookings Monday 26th February 2024.

www.lancashirewi.org.uk

[BOOK HERE](#)

Lace making workshop, Saturday 16th March, LFWI Offices, Leyland, 10am - 3.30pm

£20.00

Join Dawn Threlfall for this workshop suitable for beginners. You should have time to complete this lace snake within the time allocated. There is an additional fee of £12 payable to the tutor on the day. This provides a pricking (pattern) and instructions to take home. All equipment will be provided and all bobbins, bar one, will be pre-wound ready for use. Closing date for bookings is 4th March.

ONLY 3 PLACES LEFT!

[BOOK HERE](#)

Lancashire Federation of Women's Institutes

PHOTOGRAPHS FOR THE CALENDAR 2025

Theme – 'The Rivers of Lancashire' (Includes the Federation area)

- Images should be submitted digitally by email or as images on a CD/DVD. This is to ensure the images are high quality and suitable for reproduction.
- Each image must be accompanied by a short (up to 200 words) description of the photograph. This will be printed on the reverse of the calendar page.
- Images should primarily be in landscape format although a portrait image will be chosen for the front cover. No more than 10 images per member and they must have been taken by the member herself.
- When you send your entry, please remember to include your name and WI.
- Photographs should be emailed to officeadmin@lfw.org.uk or CDs sent to; The Federation Secretary, LFWI, Office 8 Croston House, Lancashire Business Park, Centurion Way, Leyland, PR26 6TU.

The final date for accepting photographs is Thursday 22nd February 2024

NFWI EVENTS

The NFWI Resolutions Shortlist has now been released.
The shortlisted resolutions are: -

- Dental Health Matters
- Impacts of poor housing conditions
- Say 'no' to gambling advertising
- Improving Outcomes for Women in the Criminal Justice System

There will be additional background information available on 'My WI' from 2nd November, in the next edition of WI life and at the **January meeting when we will vote for our choice.**

Our Lancashire Federation votes will be sent through to NFWI in February.

The winning Resolution will be debated and voted on again at the NFWI AGM in June.

NFWI Annual Meeting – Royal Albert Hall

5th June 2024

Tickets priced £28 will go on sale on the LFWI website on Monday 30th October and the closing date to book will be early January.

You will need to pay for your own travel arrangements and tickets are non-refundable.

