

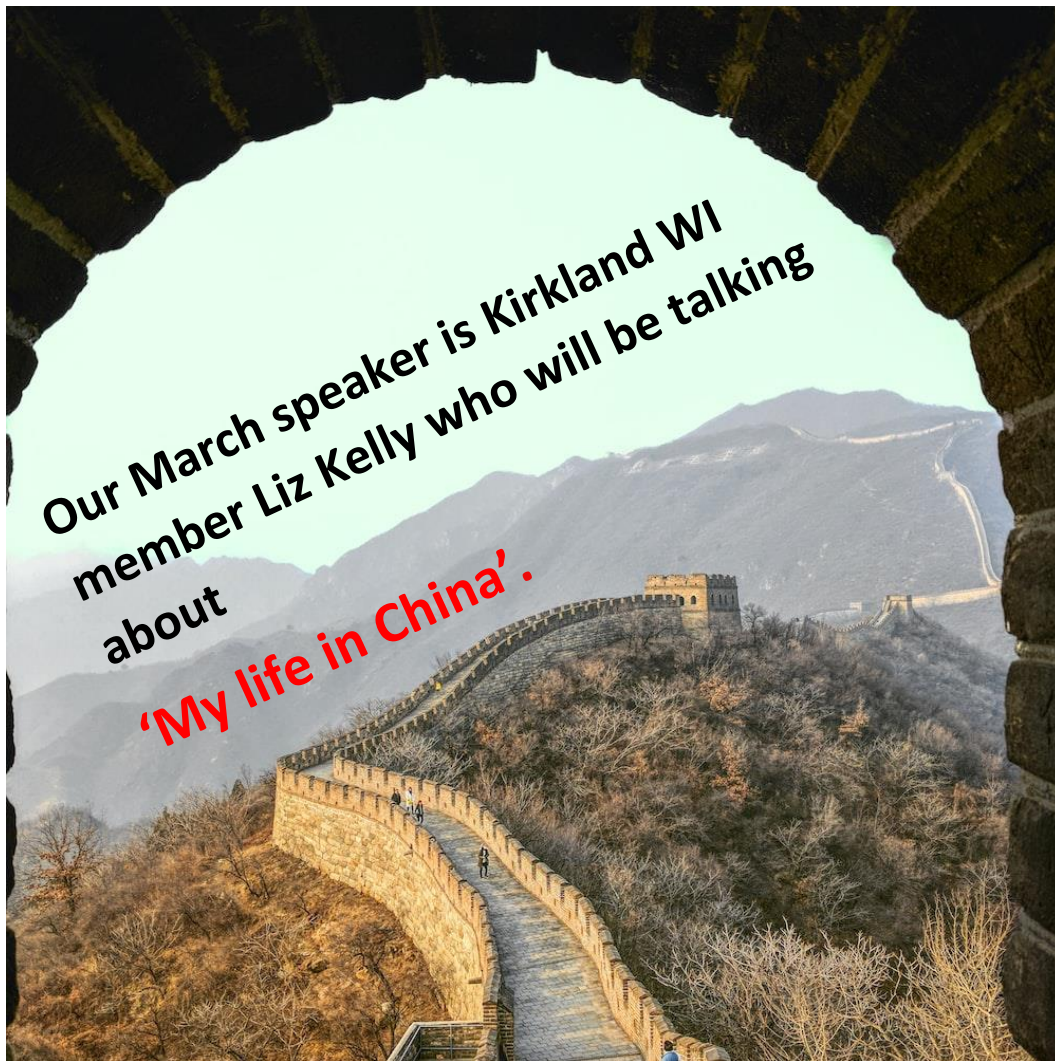
KIRKLAND WI
NEWSLETTER
MARCH 2023

theWI
INSPIRING WOMEN

www.kirklandwi.co.uk

THE NEXT MEETING IS AT KIRKLAND MEMORIAL HALL

WEDNESDAY 8th MARCH 7.30 PM



*It is with great sadness that we announce the death of our WI member and friend, Anne Kippax. Despite her health problems, Anne was always cheerful and good company; we send our condolences to her husband and family. Anne's funeral is on **Wednesday 22nd March at 11am at Beetham Crematorium.** We will have a 1-minute silence in her memory at the March meeting.*

A thank-you from our February speaker!



Unique Kidz & Co

2d • 🌐

Happy Say-Ta-Day Everybody! 🎉

This week we would like to thank the ladies of Kirkland W.I. for inviting our fundraiser Chris to come speak at their group on Wednesday evening. The ladies were very friendly, enjoyed the presentation and hearing lots of stories of the amazing young people of Unique Kidz and Co. After the presentation, the group held a collection and raised an amazing £161.50 for us! 😊 Thank you so much to the ladies of Kirkland W.I.



Say-Ta-Day!

facebook.com

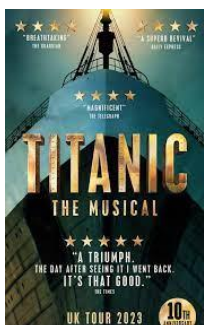


Kirkland WI trip to see 'Buddy' at the Grand Theatre Blackpool

Wednesday 26th April 7.30pm

£32.50

Book a place by signing up at the March meeting or by emailing me. Closing date for booking a place is **Thursday 9th March**. Please note that once tickets are purchased a refund cannot be given.



Jane T. has a spare ticket for 'Titanic the Musical' at Blackpool Grand on Tuesday 21st March cost £34.50 but willing to take less to make sure it is used. If you are interested, please let me know.

Dates for your diary.....

Saturday 22nd April 10.30am Kirkland WI Jumble Sale

Saturday 19th August Kirkland Memorial Hall will be having a 100-year anniversary BBQ. More details nearer the time but **everybody welcome**.

££££££££

Subscription fees

££££££££

Lancashire Federation has set the WI membership subscription for 2023/24 at £46.00. Payment will be taken at the March meeting.

Please pay Treasurer Liz, by cheque made payable to Kirkland WI in the sum of £46.00 with your name on the reverse.

Total subscription 23/24	WI Share	Federation Share	NFWI Share
£46.00	£22.60	£10.80	£12.60

Associated Country Women of the World

Each year on or around 29th April, Women worldwide celebrate ACWW's international network by joining together to **Walk the World**.

This is a great day to join with your ACWW sisters worldwide in raising awareness and funds for ACWW's vital work.

Why not organise a walk in your WI?

If you do choose to raise funds for ACWW, please send a cheque to A04 Parkhall, 40 Martell Road, London SE21 8EN and put the name of your WI and 'Lancashire Federation' on the reverse.



LFWI EVENTS

All the following events can be booked on <https://lancashirewi.org.uk/book-lfwi-events>

Events are listed in date order so keep scrolling!

Watercolour Painting workshop 'Sweet Dreams'

Friday 24th March 2023 LFWI Offices, Leyland, PR26 6TU 10am – 3.30pm

£20

Have fun developing your use of watercolours while focusing on the challenging shapes, colours, reflections and textures of SWEETS! YUM.

Please bring a smart phone so that you can photograph your arrangement for use at home later. You will also need your watercolours, brushes, watercolour paper and a pencil. If you have your own masking fluid that would be great. You might like to stretch your paper (s) beforehand, but this is not essential.

The tutor will bring the sweets (securely wrapped for the tutor's own benefit!!) and some watercolour paper for those who have none. She will also provide spare brushes, pencils, masking fluid and some watercolours to borrow if needed.

Closing date for bookings Monday 6th March 2023

AMIGURUMI WITH ANGIE MURRAY

Saturday 22nd April 2023 – LFWI Offices, Leyland – 10am - 3.30pm

£20.00

Amigurumi is the Japanese art of crochet or knitting a stuffed yarn toy - typically creatures or objects with oversized heads. This art is most associated with crochet.

Please note this session is not for beginners. Attendees must be able to do chain, double crochet and triple stitches and follow a pattern. Don't worry about pattern reading this will

be explained at the start of the session. You just need to be able to count.... We will be making an Octopus.

You will need the following materials

3.5mm crochet hook

50 gm double knit yarn (preferably cotton or bamboo yarn for durability)

Small amount of white yarn for hat trim and eyes

Snips or scissors for snipping yarn

Small amount of toy stuffing

Angie will bring a bag of stuffing if you don't have any in your stash.....

Come prepared for a fun day of crochet and a complete toy to take home.

Don't forget your packed lunch and closing date for bookings Wednesday 5th April 2023

Flower arranging demonstration and lunch at The Fence Gate Inn, Burnley

Monday 24th April – 12 noon – 4pm

£30

Step into Spring and join the Board of Trustees for a delicious two course lunch at The Fence Gate Inn, Burnley, followed by a flower arranging demonstration by Linda Hardman.

Inspired by a love for flowers, Linda founded the Flower Shop in Clitheroe in 1995 where she uses her skills to provide beautiful bespoke designs. Linda will demonstrate a variety of bouquets and arrangements, and these will also be available as raffle prizes following the demonstration. This event is also open to female non-members, so you're free to bring along family and friends with a passion for food and flowers. There will also be information available for anyone wishing to join the WI.

Menu

Oven baked Scottish Salmon Fillet, herb crust, lemon and chive butter sauce **Or** Vegetable Wellington, vine tomato and herb sauce (Served complete with potato and vegetable accompaniments) Followed by: -

Berry Pavlova, crème Chantilly, fresh raspberry sauce

Tea/Coffee, Chocolate Mints

Closing date for bookings Monday 3rd April 2023

JEWELLERY MAKING WORKSHOP

Saturday 13th May 2023 10am – 3.30pm LFWI Offices Leyland

Tutor Maggie Jones

£20

Participants will make a suite of coordinating jewellery, i.e necklace, bracelet and earrings. They'll learn several techniques to create jewellery using beads, wire, fasteners etc. including - securely fixing components together, making loops for pendants and earrings, linking beads together.

A certain amount of dexterity is needed in handling small beads. We will use pliers to cut wire and open/ close jump rings. All tools and trays will be supplied for use on the day.

Maggie is a professional trained designer and has regularly had jewellery designs published in magazines, as well as in a couple of books and was a guest designer on Jewellery Maker TV. as well as running courses for lifelong learning and retail outlets.

Kits will be available to buy on the day at a cost of £10 payable to the tutor.

Closing date for bookings Monday 17th April

LFWI CRAFT & PRODUCE SHOW SCHEDULE 2023

You can find the full show schedule [HERE](#)

Wednesday Sept 20th 10.00am to 9.00pm

Thursday Sept 21st 10.00am to 5.30pm

At Best Western Garstang Country Hotel and Golf Club PR3 1YE

The 2023 theme is 'DECK THE HALLS'

BETTY SANDERSON MEMORIAL TROPHY

AN ELF IN ANY MEDIUM & ANY SIZE

Please refer to the 2023 LFWI County Show Schedule

Entry Fee: £2.00 per WI for up to 5 entries

Entries: Entries must be labelled with the name of the member and her WI.

Closing Date: Tuesday 1st August 2023

2023 Resolutions

The winning resolution for Lancashire was 'clean rivers for people and wildlife', closely followed by 'on-line gambling harm'. We now await the overall National winner.

NFWI EVENTS

NFWI Annual Meeting

The Annual meeting will take place in St David's Hall in Cardiff on 25 May 2023. This will be a hybrid meeting, with both virtual and in-person attendance offered. In-person observer tickets will be priced at £22 each and online observer tickets will be priced at £5 online. Look out for more information in early 2023.

Royal Greeting Card



Throughout the Queen Elizabeth's reign and membership of the WI, it was an annual tradition to invite WI members to create a birthday card, which would be sent on behalf of the Board of Trustees and the WI to celebrate Her Majesty's birthday in April.

This year, the NFWI would like to continue this tradition and send a birthday card to our Royal members of the WI; Her Majesty the Queen Consort and Sophie, Countess of Wessex, as well as other female members of the Royal Family which have a long-standing reputation of supporting the work of the WI and campaigns that have been important to our members.

WI members are invited to create a card(s) which can be sent to a member of the Royal Family, at a time chosen by the NFWI Board of Trustees.

Click [HERE](#) to find full details